

GREAT BRITAIN.



FIG. 34.—A COMPLETE TRAVELLING CHARIOT, DATE ABOUT 1840.



FIG. 35.—THE ORIGINAL BRIGHAM, BUILT FOR LORD CHANCELLOR BROUGHAM, 1828.

**Carrozze
Storiche 2**

www.miomuseo.net



FIG. 36.—TOWN CHARIOT OF THE LATE RIGHT HON. W. E. GLADSTONE, M.P.

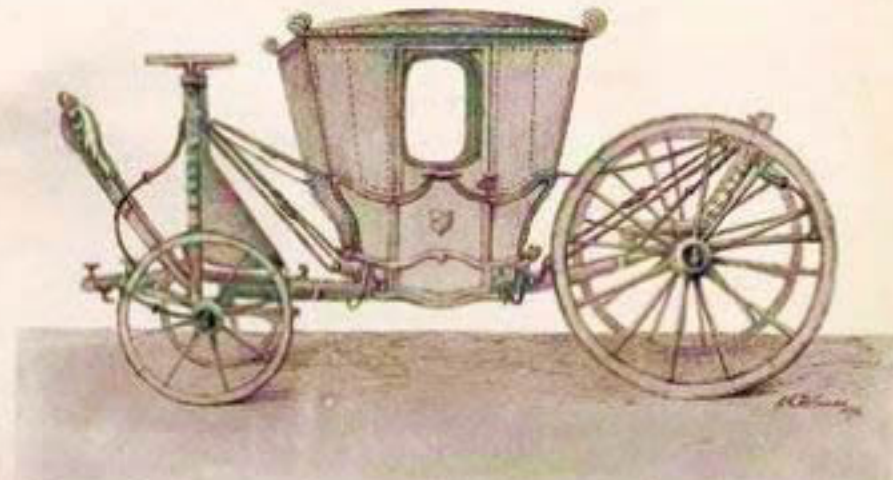


FIG. 37.—COACH BELONGING TO MRS. PERRY HERRICK, OF BRAMANOR, LEICESTERSHIRE (DATE ABOUT 1740).

FRANCE.



FIG. 38.—STATE COACH, CALLED "LA TOISÉE," AT THE TRIANON, VERSAILLES.



FIG. 39.—STATE COACH, CALLED "DU BAPTÊME" (SIDE VIEW), AT THE TRIANON, VERSAILLES.



FIG. 40.—CORONATION COACH, AT THE TRIANON, VERSAILLES.



FIG. 41.—STATE COACH, CALLED "DU BAPTÊME" (FRONT VIEW), AT THE TRIANON, VERSAILLES.

FRANCE.

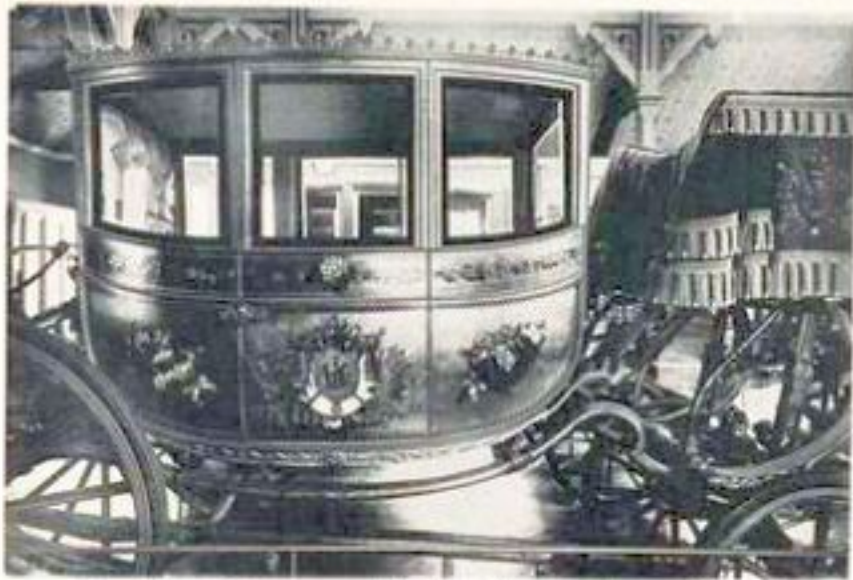


FIG. 42.—STATE COACH, CALLED "DU BAPTÊME," AT THE TEGNON, VERSAILLES.



FIG. 43.—STATE COACH, BUILT FOR THE EMPRESS MARY LOUISE, AT THE TEGNON, VERSAILLES.



FIG. 44.—DRESS COACH OF THE EMPRESS EUGENIE, AT FARNBOROUGH.



FIG. 45.—STATE COACH OF THE EMPRESS EUGENIE, AT FARNBOROUGH.

FRANCE.



FIG. 46.—TRAVELLING CHARIOT OF THE EMPEROR NAPOLEON I. (TAKEN AT WATERLOO, 1815.)



FIG. 47.—CORONATION COACH OF THE EMPEROR NAPOLEON I.



FIG. 48.—BAROUCHE OF THE EMPEROR NAPOLEON I. (USED AT ST. HELENA.)



FIG. 49.—TRAVELLING BAROUCHE OF THE EMPEROR NAPOLEON III. (TAKEN AT SEDAN, 1871.)

FRANCE.



FIG. 30.—SIXTY CARRIAGE OF EMPRESS MARIE LOUISE.

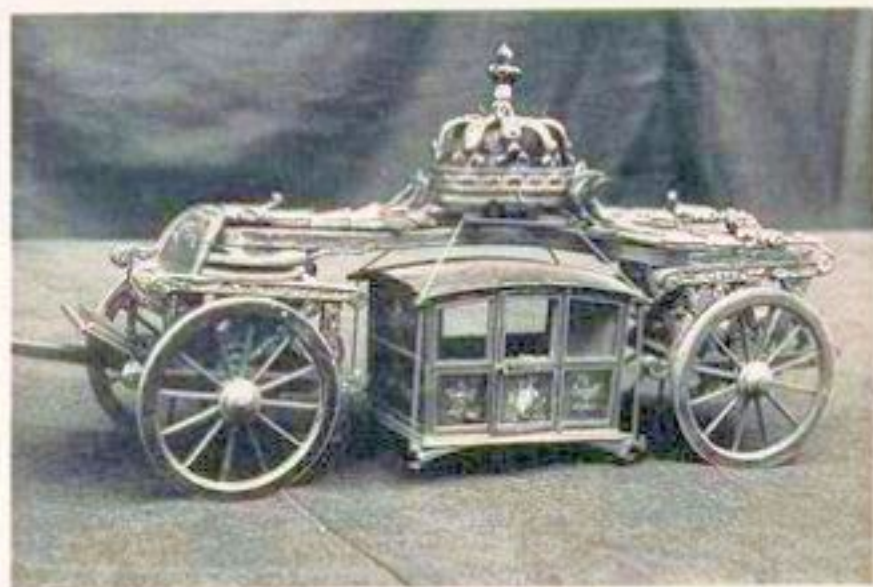


FIG. 31.—MODEL OF A DRESS CARRIAGE SUSPENDED FROM THE ROOF, AT THE CLUNY MUSEUM, PARIS.

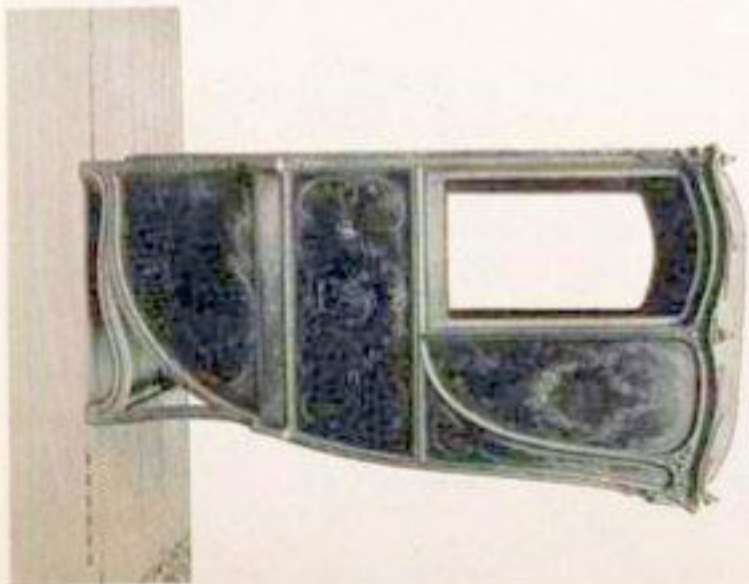


FIG. 32.—SEDAN CHAIR, 18TH CENTURY.



FIG. 33.—MODEL OF CARRIAGE, WITH PILLOW SEAT FOR COACHMAN, AT THE CLUNY MUSEUM, PARIS.

RUSSIA.



FIG. 14.—GIFT CARRIAGE OF THE EMPRESS CATHERINE II.

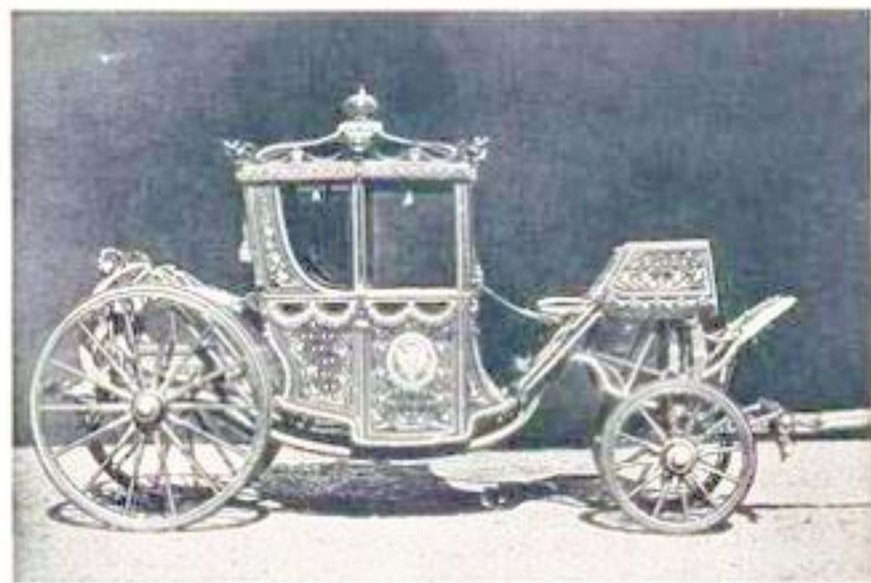


FIG. 15.—GIFT CARRIAGE (18TH CENTURY).



FIG. 16.—DRESS CHARIOT OF THE Czarovitch.



FIG. 17.—STATE SLEIGH OF THE EMPRESS CATHERINE II.

GERMANY.



FIG. 35.—THE OLD STATE CARRIAGE OF KINGS OF PRUSSIA.

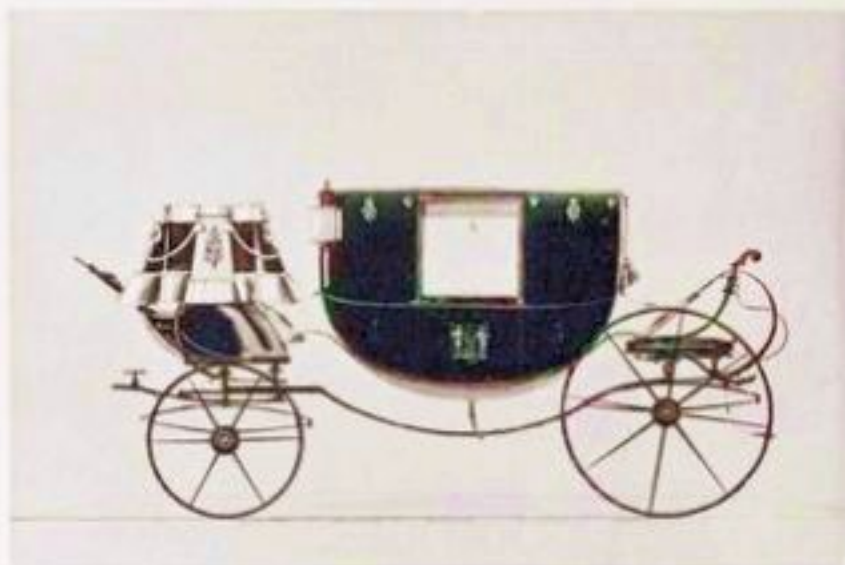


FIG. 36.—DRESS COACH OF KING WILLIAM I. OF PRUSSIA.
(BUILT IN LONDON ABOUT 1851.)

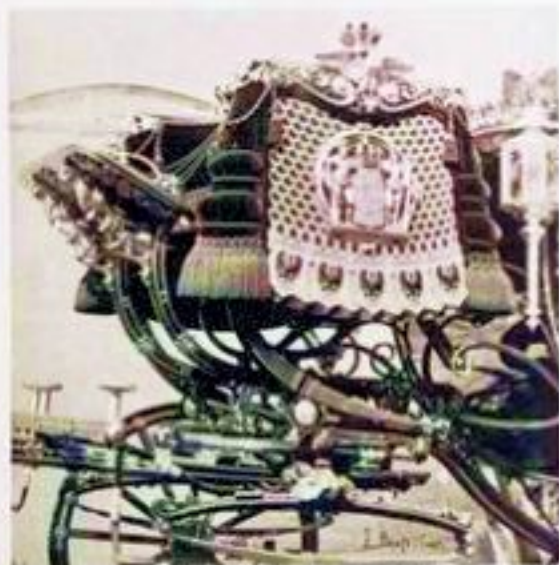


FIG. 30.—HARNESSEMENT OF THE NEW STATE COACH OF KING WILLIAM I.



FIG. 31.—LANDAU OF THE EMPRESS FREDERICK,
PRESENTED BY THE CITY OF KÖNIGSBERG, 1858.

SAXE COBURG-GOTHA.

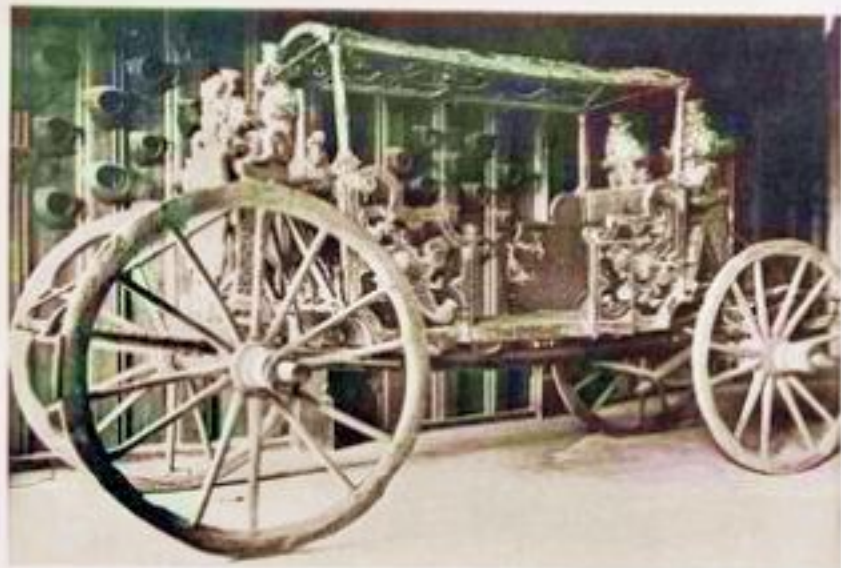


FIG. 66.—BRIDAL CARRIAGE USED BY DUKE JOHANN CASIMIR, OF SAXONY, AND HIS BRIDE, PRINCESS ANNA OF SAXONY, ON THEIR ENTRY INTO COBURG, 1585.



FIG. 67.—CARRIAGE OF DUKE ERNST, PRINCE OF SAXE GOTHA, 26TH MARCH, 1675.



FIG. 68.—CARRIAGE BUILT BY DUKE AUGUSTUS, OF SAXE-GOTHA-ALTENBURG, INTENDED FOR THE USE OF EMPEROR NAPOLEON I. ON HIS ENTRY INTO GOTHA, 1808 (BUT THE EMPEROR REFUSED TO USE IT).



FIG. 69.—BRIDAL CARRIAGE OF DUKE ERNST I., OF SAXE COBURG-SAALEFELD, AND PRINCESS LOUISE, OF SAXE-GOTHA-ALTENBURG, 1817.

SAXE COBURG-GOTHA.



FIG. 70.



FIG. 71.



FIG. 72.



FIG. 73.

OLD SLEDGES.

AUSTRIA.

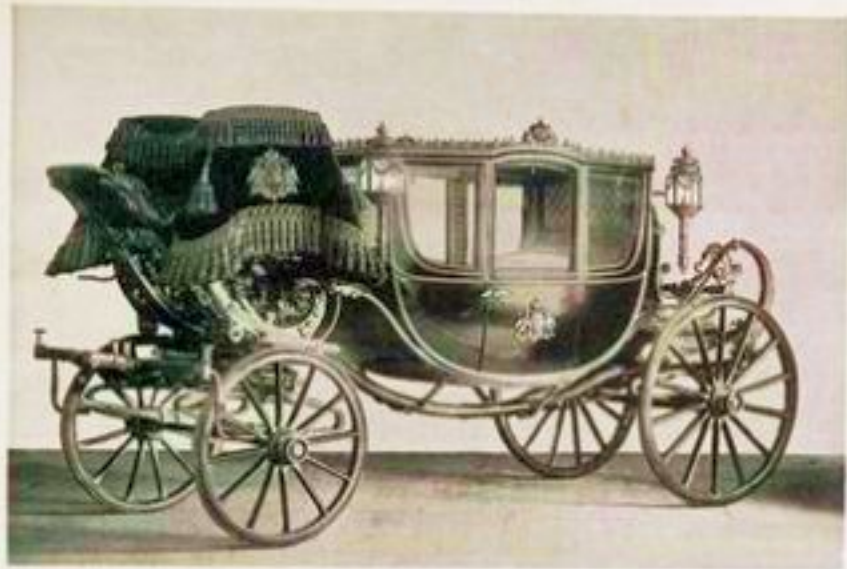


FIG. 74.—MODERN IMPERIAL STATE COACH.



FIG. 75.—MODERN IMPERIAL STATE CHARIOT.



FIG. 76.—FESTIVAL STATE CARRIAGE USED BY HER MAJESTY THE EMPRESS MARIE THERESA.



FIG. 77.—IMPERIAL DRESS LANDAU.

AUSTRIA.



FIG. 78.—IMPERIAL SEMI-STATE BAROUCHE.



FIG. 79.—SEMI-STATE PHAETON OF THE EMPEROR (TO BE USED WITH POSTILLIONS).



FIG. 80.—IMPERIAL STATE COACH.



FIG. 81.—IMPERIAL STATE COACH.

AUSTRIA.



FIG. 82.—STATE BLACK FUNERAL HEARSE.



FIG. 83.—CORONATION COACH DRAWN BY EIGHT WHITE HORSES.



FIG. 84.—STATE COACH AND HORSES.

BAVARIA.



FIG. 85.—STATE SLEIGH.

AUSTRIA.



FIG. 56.—FEDERAL COACH DRAWN BY EIGHT BLACK HORSES.



FIG. 57.—STATE BLACK FEDERAL HEARSE DRAWN BY EIGHT BLACK HORSES.



FIG. 58.—CARRIAGE DRIVEN USED BY H.M. FRANCIS I.



FIG. 59.—DRESS CHARIOT WITH TWO SEATS, USED BY THE MASTER OF THE HORSE OF HIS MAJESTY THE EMPEROR.

BAVARIA.



FIG. 30.—STATE COACH.



FIG. 31.—STATE COACH.



FIG. 32.—STATE CARRIAGE OF KING LOUIS II.



FIG. 33.—STATE SLEIGH OF KING LOUIS II.

SPAIN.



FIG. 98.—SEDAN CHAIR OF KING CHARLES III.



FIG. 99.—SEDAN CHAIR OF KING FERDINAND VI.



FIG. 100.—STATE COACH OF QUEEN JEANNETTE-FOLLE.



FIG. 101.—STATE COACH OF KING FERDINAND VII.