



Speciální kabriolet AERO 50 s karoserií Sodomka, 1940

# AUTO STORICHE 4

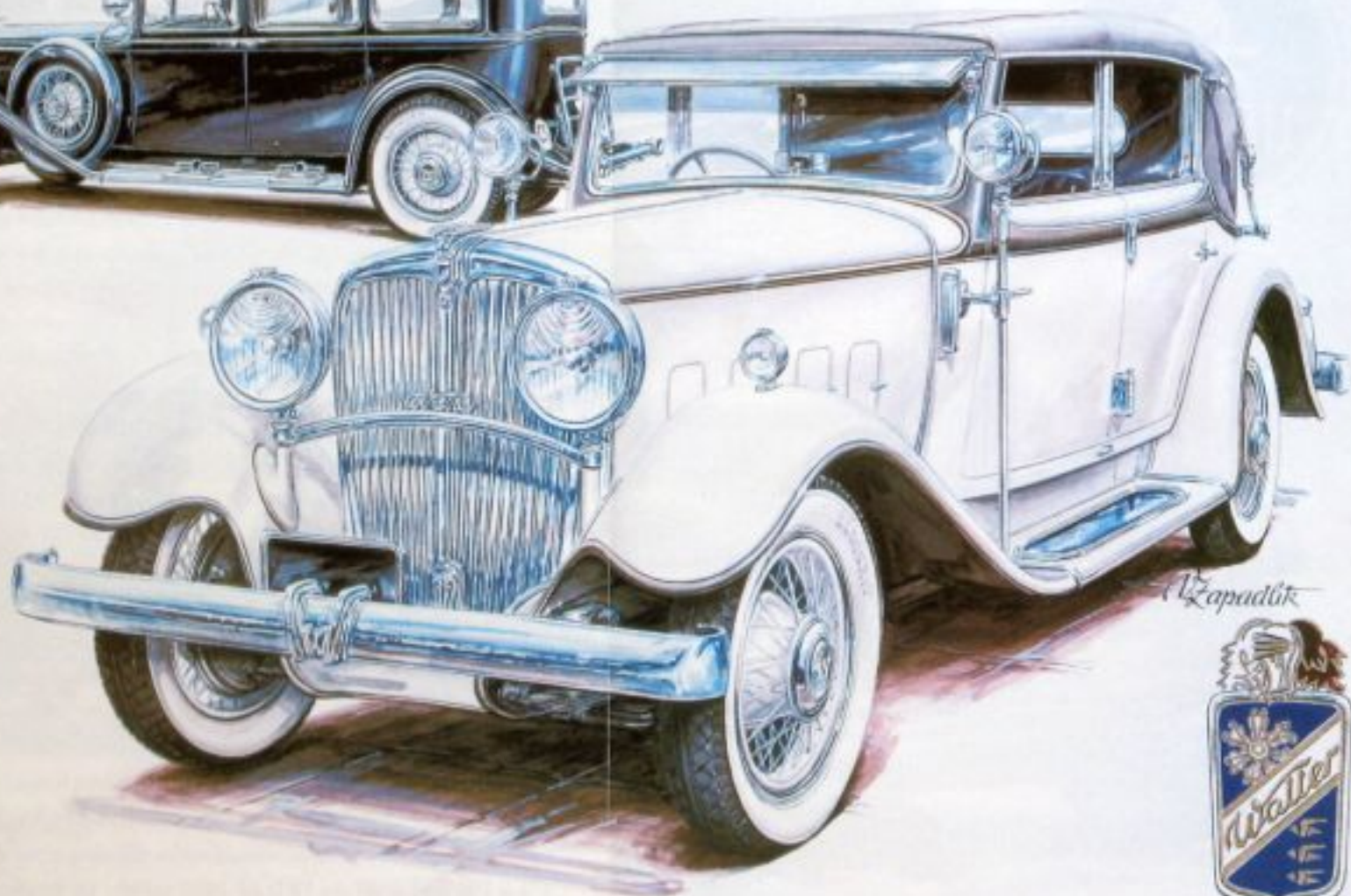




*Azapadlik*

1931 WALTER

Walter





50



**BERGMEISTER** ADR





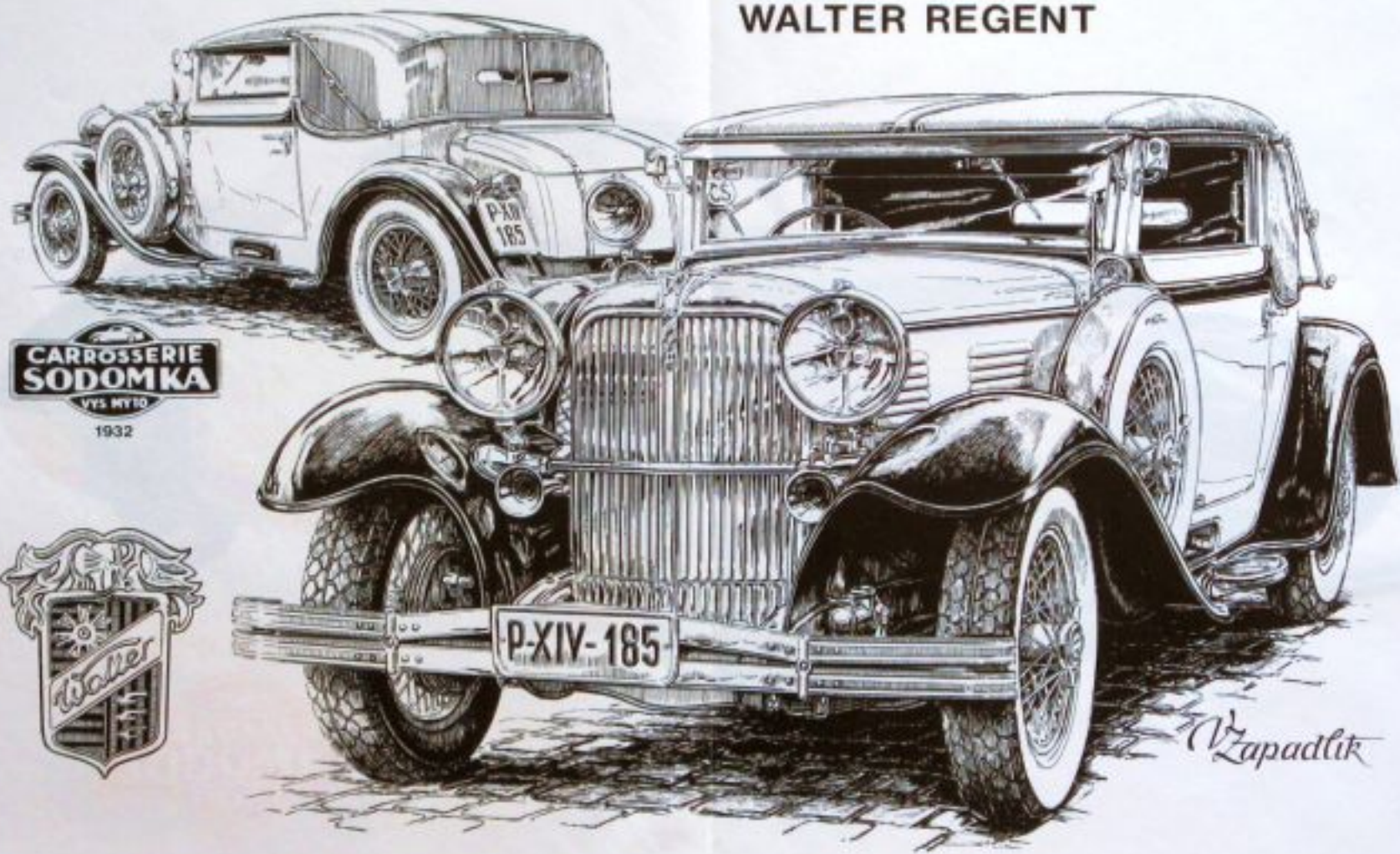
*V Zapadlik*



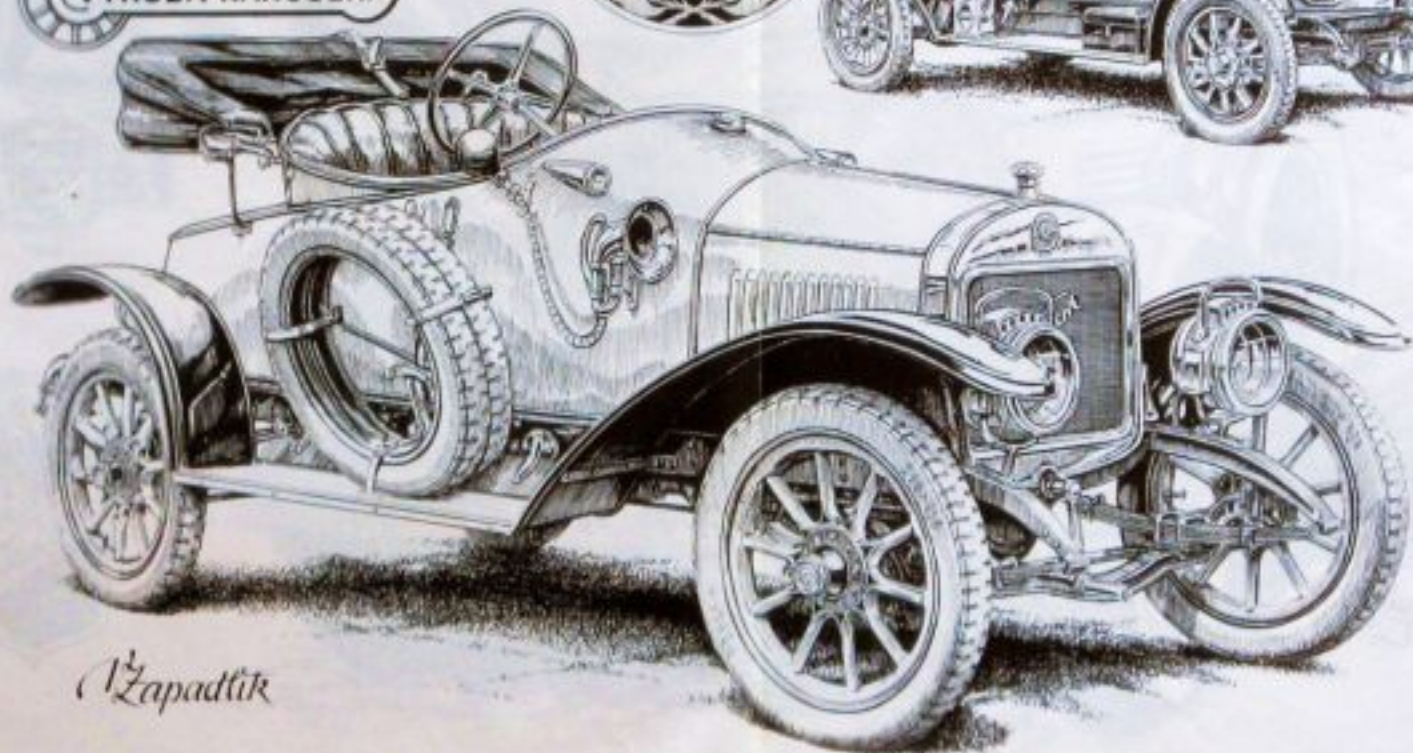
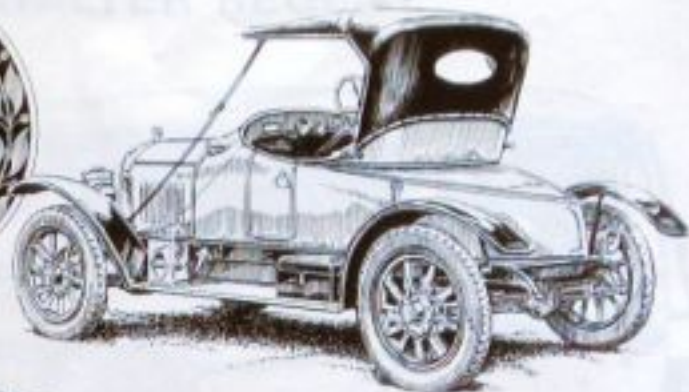
MERCEDES, karoserie Erdmen&Rossi (Německo), r. v. 1934



# WALTER REGENT



**Jan**  
**Synek**  
ZAL. 1908  
CHLUMEC N. C.  
VÝROBA KAROSÉRIÍ



*Zapadlík*



SVĚT JE PLNÝ  
ALE TY CO  
TY JSOU N



**Ferrari**



**500 K**

